

# **Saddlers Riding Club**



[saddlersridingclub.com](http://saddlersridingclub.com)

Tuppenhurst Farm

Rugeley

WS15 4HJ

[saddlersridingclub@outlook.com](mailto:saddlersridingclub@outlook.com)

# **Rules**

1. The committee have the right to decide on matters not covered.
2. Competitors must wear hard hats complying with current British Safety standards
3. Correct attire to be worn when competing in all classes.
4. The committee will not tolerate any mistreatment of any horse/pony by owners or any person. Anyone persisting will be banned from the club.
5. Animals under the age of 4 MUST NOT be ridden on the showground.
6. Disorderly conduct or abuse towards officials will result in expulsion from the showground.
7. In the event of an objection concerning age of rider where the age limits apply, a birth certificate must be produced prior to competing at further shows.
8. No whip to exceed 30 inches in length.
9. Riders must not canter or gallop in spectator areas. Warm up areas must be used.
10. No non-competitive entries are allowed.
11. Entry fees are refunded at the discretion of the committee.
12. The committee/landowner/organisers do not accept any responsibility for accidents to any person, animal or property on the showground.
13. Dogs to be kept on leads at all times. Owners to pick up mess and dispose of correctly.
14. THE JUDGES DECISION IS FINAL. Objections to age or height restrictions must be submitted in writing with a deposit of £20. Deposit refunded if the objection is upheld.

15. Long hair should be worn in a hairnet or secured in such a way as not to hang below the collar.
16. Horse/ponies known to kick or misbehave must wear a red tail ribbon and be kept away from other animals and spectators where practicable.
17. Riders 16 years and under must **NOT** wear spurs.
18. Season points are not transferable in cases of change of owner/handler/rider in any class.
19. Once the gate of the show ring is closed, no more entries for the class will be taken.
20. LITTER MUST BE TAKEN HOME.
21. In case of a fall of rider, the rider must leave the ring un-mounted. Competitors are not allowed to compete that day until permission from first aider.
22. Stallions/colts to be bitted and their rider/handler must be 16 years and over.
23. Horseboxes/trailers must not be mucked out on the showground.
24. All equines entering the showground must have up to date flu vaccinations. Proof of such may be requested and failure to provide the horses passport for inspection will result in expulsion.
25. You are **NOT** allowed to smoke/vape on Saddlers Showground. If you wish to smoke/vape, you may do outside the entrance of the hosting venue.
26. **All trophies should be returned clean and engraved by the October show. Failure to do so will result in competitors being charged for new trophies.**
27. Earrings, body studs or jewellery MUST NOT be worn.
28. People under the age of 4 are NOT allowed to compete.
29. Show Jumping whips as BSJA rules

# **Show dates 2026**

10th May

6th June - Show Jumping

7th June

5th July - TFSS Qualifiers

2nd August

30th August

4th October

# **Prices**

## **Membership**

Single - £12

Family (Up to 3) - £25

## **Entries**

Members - £12 per class

Non-members - £16 per class

(all entrants MUST travel with the  
horse/ponies passport)

# **Presentation Evening**

Saturday 30th January 2027

St Matthews Sports and Social Club

St Matthews Road, Burntwood, WS7 9EP.

Tickets on sale at the end of the season.



# Coton House Farm Wedding Venue

[www.cotonhousefarm.com](http://www.cotonhousefarm.com)



## Cavaletti Collection

### Proud Supporters of **Saddlers Riding Club 2025**

Cavaletti Collection offers a range of individually designed Saddles made from the finest leather to suit all riders and disciplines. They all feature our unique, one-of-a-kind interchanging gullet system with 6 optional widths.



[cavaletticollection.co.uk](http://cavaletticollection.co.uk)



S&P DISCO & KARAOKE  
SIMPLY THE BEST!

Any party and any venue  
catered for  
music from all decades! We  
play anything requested!

phone Stan ~~0753000036~~  
Mobile 0753000036  
Fully insured and pat tested



Ltd

Gerry Osborne  
Managing Director  
07548346990

Osborne Transport Solutions

# **Show Jumping**

**Saturday 6th June from - 11am**

## ***Show jumping rules***

*Pole down = 4 faults*

*Refusal = 4 faults*

*3rd refusal = elimination*

*Fall = elimination*

1. The Padded Baton may only be used as an aid to support the natural aids in encouraging the horse forward, the Padded Baton may be used to support the shoulder to encourage the horse in the desired direction.
2. The Padded Baton must not be used to discipline or punish the horse/pony nor to vent an Athlete's temper. Such use is always excessive.
3. If a Horse's skin is broken or marked, as a result of the use of the Padded Baton, this is always considered excessive.
4. The Padded Baton must not be used more than 3 times in total whilst in the arena.
5. The Padded Baton is not to be used immediately after Refusal, Run Out or Elimination in either the competition or practice arena.
6. The arm must not come above the shoulder and the Padded Baton should contact behind the riders leg to reinforce the leg aid.
7. Where the Padded Baton is used to support the shoulder. The rider must retain both hands on the reins and apply contact and or direct pressure with the Padded Baton down the shoulder. No more than three contacts are allowed on the shoulder whilst in the arena.
8. Misuse of the Padded Baton in the arena, practice arena or anywhere on the show ground will result in disciplinary action being taken.

### **9.30am - Clear Round**

**Cross Pole Clear Round £3 per entry payable at the entry tent at time of entry.**

#### **Lead Rein or Assisted Mini Jumping Max 30cm.**

A short course set over very low poles, not exceeding 30cm. Horse or pony any height, rider any age in line with show rules.

#### **Very Novice 40cm.**

A course of cross poles and very low poles at 40cm with no fillers. Horse or pony any height, rider any age in line with show rules.

#### **Novice 50cm.**

Not exceeding 50cm. Horse or pony any height, rider any age in line with show rules.

#### **Intermediate 60cm.**

Not exceeding 60cm. Horse or pony any height, rider any age in line with show rules.

#### **Open 70cm.**

Not exceeding 70cm. Horse or pony any height, rider any age in line with show rules.

#### **Lead Rein Handy Pony.**

Riders 10 years and under on 1st Jan 2026. Any size horse or pony.

#### **Open Handy Horse/Pony.**

Riders any age. If you are competing in Lead Rein, you are not allowed in the Open.



**Paul Starkey Transport Limited,**  
3, Anglian Road,  
Redhouse Industrial Estate,  
Aldridge. WS9 8EP.  
Tel: 01922 457044



Tel: 01543 481451

Address: 6a South Staffs Freight, Lynn Lane, Shenstone, WS14 0ED



**Showstoppers Ltd**

7 Urban Road

Kirkby in Ashfield

Nottinghamshire

NG17 8AH

**Tel:** 01623 754985

**E-Mail:** [webinfo@showstoppersltd.co.uk](mailto:webinfo@showstoppersltd.co.uk)

## **In Hand Showing**

All handlers 16yrs & under must wear a hard hat. Saddlers RC organisers strongly recommend hard hats are worn by all.  
Colts & Stallions to be bitted, handlers over 16yrs.

**9.15am** Competitors are invited to a free practice round with their horses to **Warm Up** under the guidance of the ring steward.  
Support given where needed.

### **Class 1 - Senior Handler.**

For handlers 17 years and over on 01/01/26.

*Kindly sponsored by A K Feeds*

### **Class 2 - In Hand Three Years and Under.**

Open to horses and ponies born in or after 2023. Foals must be a minimum of 4 weeks old on the day of show.

### **Class 3 - In Hand Mare & Gelding 4 Years and Over.**

Born in or before 2022. Any height or breed.

### **Class 4 - In Hand Riding Club, Sports & Hunter Horse/Pony.**

Open to any horse or pony suitable for all riding club activities.

Judged on suitability, manners & turnout.

*Kindly sponsored by Coton House Farm & Events*

### **Class 5 - Young Handler.**

Handlers to be 16 years or under on 01/01/26. Hard hats must be secured at all times. No colts or stallions.

*Kindly sponsored by S&P Disco & Karaoke*

**Class 6 - In Hand Veteran Horse or Pony 15 Years & Over.**

Born in or before 2011. Horse's age must be displayed on the bridle.

**Class 7 - In Hand Coloured, Spotted & Palomino.**

Any breed, height & age.

*Kindly sponsored by Showstoppers Rosettes*

**Class 8 - In Hand Cobs, Toy Cobs, Traditional & heavyweight.**

Any height. To be shown according to type.

*Kindly sponsored by Cheryl Osborne In Memory of Alfie*

**Class 9 - In Hand Shetland & Miniature Horses**

*Kindly sponsored by MDC Equestrian LTD*

**Class 10 - In Hand Mountain and Moorland.**

To be shown in a natural state. Open to pure bred Dartmoor, Exmoor, Welsh Sec A, B, C & D, Fell, Dales, New Forest, Connemara and Highland.

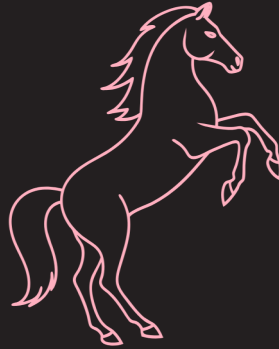
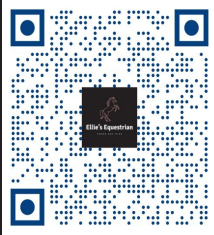
*Kindly sponsored by Sioned Cash In Memory of Judith Rowlands - Mihangel Welsh Cobs*

**Class 11 - In Hand Driving Type.**

Open to horses and ponies any age. No vehicles permitted.

**IN HAND JUNIOR CHAMPIONSHIP** – 16 years or under. For First and second Prize Winners.

**IN HAND CHAMPIONSHIP** – 17 years or over. For First and second Prize Winners.



# Ellie's Equestrian

H O R S E   B O X   H I R E

0121 798 2826

[www.elliesequestrian.co.uk](http://www.elliesequestrian.co.uk)



**EQUESTRIAN LTD**

— Annabelle Garlick —

☎ 07468917588

✉ [annabelle.mdceq@gmail.com](mailto:annabelle.mdceq@gmail.com)

MDC Equestrian Ltd

Are based at Tuppenhurst Farm

WS15 4HJ

## **Ridden Showing**

**12pm** Competitors are invited to a free practice round with their horses to **Warm Up** under the guidance of the ring steward. Support given where needed.

### **Class 12 - Open Ridden Best Turned Out.**

Open to all, including lead rein riders. Judged solely on turnout.

*Kindly sponsored by Cavaletti Collection*

### **Class 13 - Lead Rein Showing.**

Ponies 128cm & under. Riders 10 years and under on 01.01.26. Judged on suitability and presentation of the pony and rider. Lead rein to be attached directly to the noseband.

### **Class 14 - Junior Best Rider.**

Riders 16 years & under on 01.01.26. Open to horses & ponies. Judged on rider ability, performance, turnout and presentation.

*Kindly sponsored by Osborne Transport Solutions Ltd*

### **Class 15 - Newcomer/ Novice Ridden.**

A class for genuinely novice horse, ponies or riders. Riders to be at least 12 years old or over on 01.01.26. Riders will not be asked to canter as a group but may include canter in their individual performance. Combination of horse/pony & rider not to have competed together in previous years at any show.

### **Class 16 - Ridden Cobs, Toy Cobs, Traditional & Heavyweight.**

Any height. To be shown according to type.

*Kindly sponsored by Paul Starkey Transport Ltd*

### **Class 17 - Open Ridden Mountain and Moorland.**

Open to purebred Welsh Sections A, B, C, D, Exmoor, Dartmoor, Dales, New Forest, Connemara, Fell, Highland. Open to riders any age

*Kindly sponsored by Jennifer Rollason In Memory of Jet Black*

**Class 18 - Best Ridden Horse or Pony. Any height.**

Open to any breed, riders any age. Judged on conformation, manners and performance.

**Class 19 - Ridden Veteran Horses & Ponies 15yrs & Over.**

Born in or before 2011. Horse's age must be displayed on the bridle.

No spurs or galloping in this class.

*Kindly sponsored by Jennifer Rollason In Memory of Rhino*

**Class 20 - Open Ridden Coloured, Spotted & Palomino.**

Any breed or height, riders any age.

*Kindly sponsored by Ellies Equestrian*

**Class 21 - Senior Best Rider.**

Riders 17 years and over on 01.01.26. Open to horses & ponies. Judged on rider's ability, performance, turnout and presentation. No spurs.

**Class 22 - Ridden Show Hunter, Hunter & Riding Club Horse or Pony.**

Judged on suitability, manners and performance.

*Kindly sponsored by A K Feeds*

**Class 23 - Open Working Hunter.**

Any height. Judged on suitability and presentation of the pony and rider. Jump height adjusted suitable for pony height, max 65cm. To include lead rein.

**JUNIOR RIDDEN CHAMPIONSHIP** – 16 years or under. For First and second Prize Winners.

**RIDDEN CHAMPIONSHIP** – 17 years or over. For First and second Prize Winners.

## **Handy Pony**

A fun class with a course of obstacles to navigate and score points.  
Casual dress allowed but long sleeves must be worn, also hard hats  
must be worn and secured at all times.

NO whips or spurs allowed.

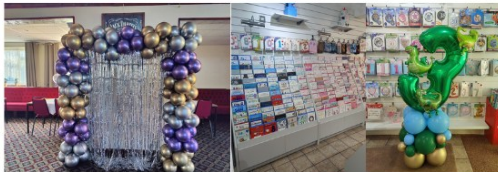
### **Class 24 - Lead Rein Handy Pony.**

Riders 9 years and under on 1st Jan 2025.

*Kindly sponsored by The Card Shop.*

### **Class 25 - Open Handy Horse/Pony.**

Riders any age. If you are competing in Lead Rein, you are not  
allowed in the Open.



15 Eastern Avenue, Lichfield, WS13 6TE

Opening Hours - Monday - Saturday 9.30 - 4.30

Email - [thecardshop2019@outlook.com](mailto:thecardshop2019@outlook.com)

Website - [thecardshop2019.com](http://thecardshop2019.com)

Tel - 01543 212920



# **Fun Shows**

## **Saturday 6th June**

### Morning

Run and Ride

Dog Jumping

### Afternoon

Show Jumping Fancy Dress

Matchy-Matchy

Chase Me Charlie

## **Sunday 7th June**

Fancy Dress

Prettiest Mare

Handsome Gelding

Thelwell Lookalike

Best Mane and Tail

## **In Memory**



*Sponsored by Cheryl Osborne,  
In Memory of Alfie*



*Sponsored by Sioned Cash, In Memory of  
Judith Rowlands - Mihangel Welsh Cobs*

## In Memory



*Sponsored by Jennifer Rollason,  
In Memory of Rhino*

*Sponsored by Jennifer Rollason,  
In Memory of Jet Black*



# **Qualifiers**



## **THE NATIONAL PONY SOCIETY**

NPS Summer Championships 2026

4th – 6th August 2026

Three Counties Showground



Saturday 5th September 2026

Rugby Riding Club Grounds

Ashlawn Road

Rugby

CV22 5QE



### **Cricklands Summer championships**

To qualify, competitors need to achieve one double clear in the height they wish to qualify for.

Heights from 60cm – 1m, split into Junior/Senior and Horse/Pony sections.

Summer Championships: 14th—16th August 2026

David Broome Event Centre,  
Mount Ballan Manor,  
Crick,  
Nr Chepstow,  
Monmouthshire,  
NP26 5XP



## In-hand & Ridden

Open Cob

Open Coloured

Open Riding Horse / Hack (over 148cm / 14.2hh)

Open Hunter (including ponies of hunter type)

Open Mountain & Moorland

Veteran Horse or Pony (15 years and over)

6th September 2026

Solihull Riding Club

Four Ashes Road

Bentley Heath

Dorridge

Solihull

B93 8QE

## **Membership Points**

Saddlers Riding Club run a points accumulation system for our members during each season. At the end of each season, the competitors with the highest amount of points in each class will be invited to receive an award to our annual presentation evening. Awards are presented to the winner and runner-up of each class.

Points are awarded as follows:

1st Place	2nd Place	3rd Place	4th Place	5th Place	6th Place	Placed
7 Points	6 Points	5 Points	4 Points	3 Points	2 Points	1 Points

**Awards are presented at the annual presentation evening to the winners and runners up.**

**Saddlers Riding Club  
would like to thank all  
of our sponsors past and  
present for their  
continued support.**